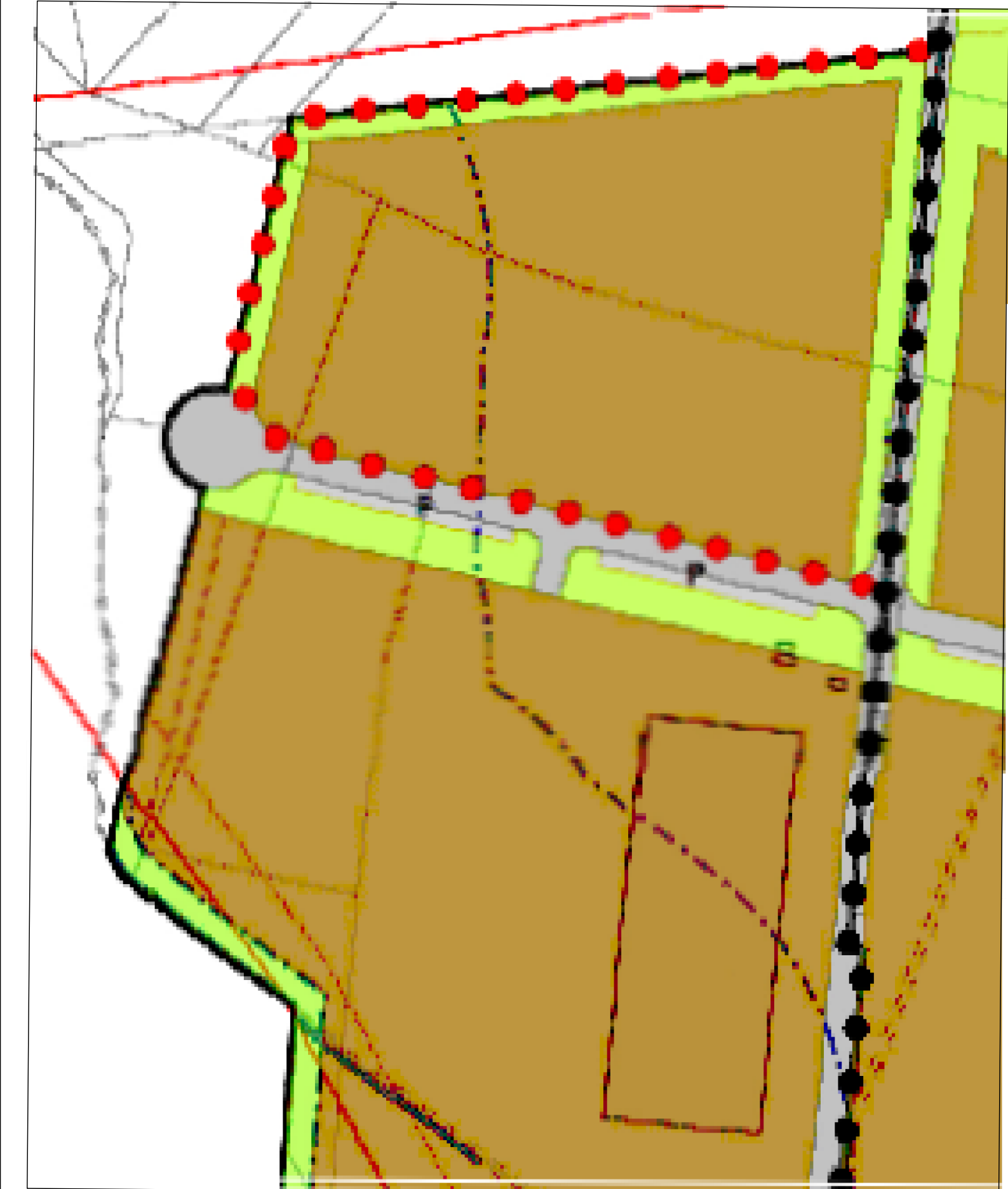


Fg. 21 part. 204 Fg. 21 part. 232 Fg. 21 part. 234
Fg. 21 part. 205 Fg. 21 part. 233 Fg. 21 part. 235
Fg. 21 part. 236 Fg. 21 part. 188 Fg. 21 part. 206 Fg. 21 part. 190



DOCT. ING. PIER LUIGI ROBUTTI STR. ROCCA SPARVIERA, 11 15067 - NOVI LIGURE <small>TEL - FAX : 0143 - 72520 pier.luigi.robutti@alice.it</small>		B&G ARCHITETTI <small>STUDIO ASSOCIATO</small> <small>ARCH. ESPRESSO DELLA</small> <small>ARCH. FIDELI - GORGHI</small> <small>NOVI LIGURE (AL)</small> <small>TEL. 0143/74444</small>	TAVOLA : TAV 1
COMMITTENTE : North Africa Connection S.r.l.		PEC NAC	
OPERA : PEC NAC COROGRAFIA-Stato attuale		SCALA : 1:500	DATA : Ottobre 2022